

SKEELE BUILDERS, Inc.
Established in 1850



**DIARY of
IRVING
SKEELE**

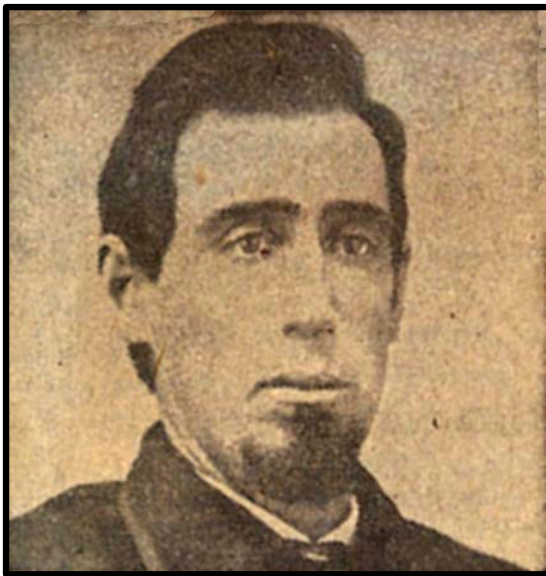


Irving Skeele Diaries 1893-1946

The following is a transcription from the daily handwritten Irving Skeele Diaries which he kept for his building business and personal life. Since Irving mixed both the business and personal content of his diaries, those interested in only his building activities would have follow through Irving's personnel notes to learn his building details. To make it easier for our readers, we have separated Irving's building activities from his day-to-day personal activities. The first two years, 1893 and 1894, the diaries have been transcribed word-for-word, containing the mix of both building and personal information. After 1894, we list all the years of construction activities first, followed by the complete listing of Irving's personal information.

In 1893, Irving is living with his parents Duane and Abbie Skeele on South Street in Summit Station, the hamlet's name changed in 1898 to Apulia Station. Irving appears to be working both independently and with his father, who was an established house and barn builder from 1850.

This publication is a draft in progress with updates to follow in the near future.



Duane Skeele
Born 13 Aug 1833
Death 7 Aug 1911



Irving Duane Skeele
Born 4 Sep 1866
Death 9 Dec 1946